



The AI we are developing

David Anglada Rotger

Image Processing Group (**GPI**)

Intelligent Data Science and Artificial Intelligence Research Center (**IDEAI**)

Universitat Politècnica de Catalunya (**UPC BarcelonaTECH**)

Structure of the presentation

- 1. The research team**
- 2. The project objective**
- 3. The AI we are developing**
 - 3.1. Segmentation and classification over HER2, RE, RP, KI67
 - 3.2. Stroma detection over HER2, RE, RP, KI67
 - 3.3. Color normalization in HER2
- 4. The expert in the loop**
- 5. Conclusions**

Research group



GPI – Image Processing Group

Signal theory and communications Department
Universitat Politècnica de Catalunya. BARCELONATECH

- 10 Faculty Members
- 12 PhD Students
- <https://imatge.upc.edu>



IDEAI - Intelligent Data Science and Artificial Intelligence

- Center funded in 2017
- 7 Research Groups
- 67 Researchers
- <https://ideai.upc.edu>

Image Processing Group: DigiPatICS

Staff

- Josep Ramon Casas
- Ferran Marqués
- Montse Pardàs
- Philippe Salembier
- Verónica Vilaplana

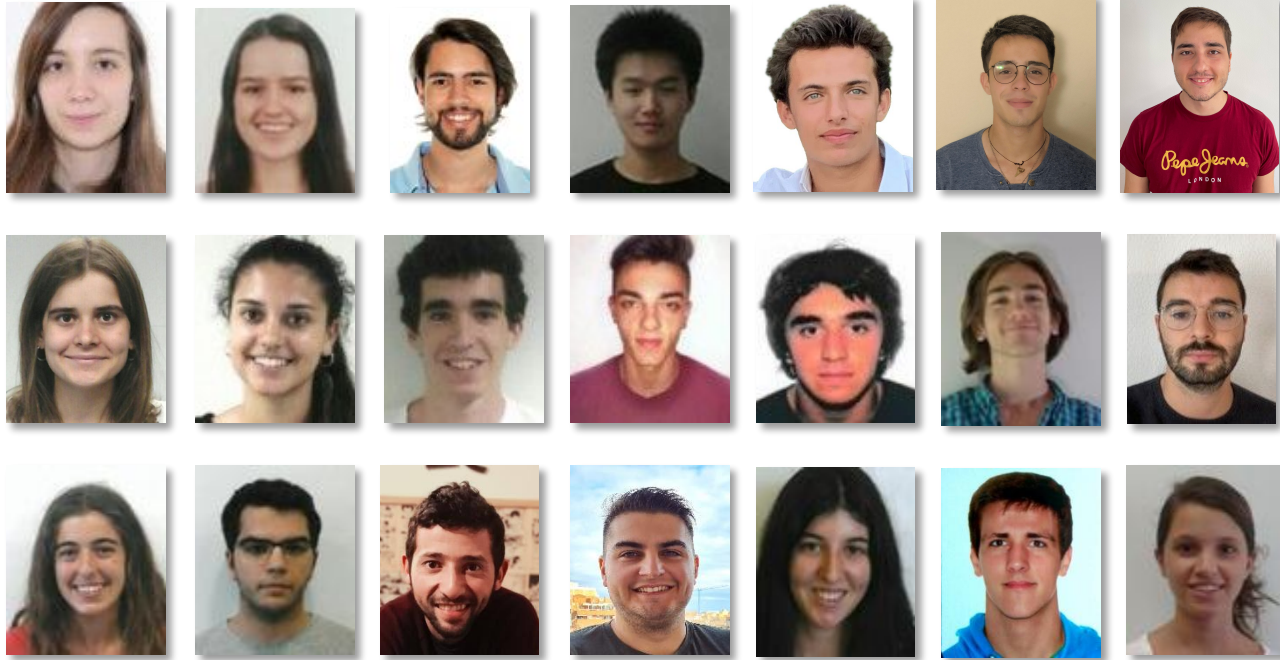


Contracted

- Sonia Rabanaque
- David Anglada



Image Processing Group: DigiPatICS



Structure of the presentation

1. The research team
2. The project objective
3. The AI we are developing
 - 3.1. Segmentation and classification over HER2, RE, RP, KI67
 - 3.2. Stroma detection over HER2, RE, RP, KI67
 - 3.3. Color normalization in HER2
4. The expert in the loop
5. Conclusions

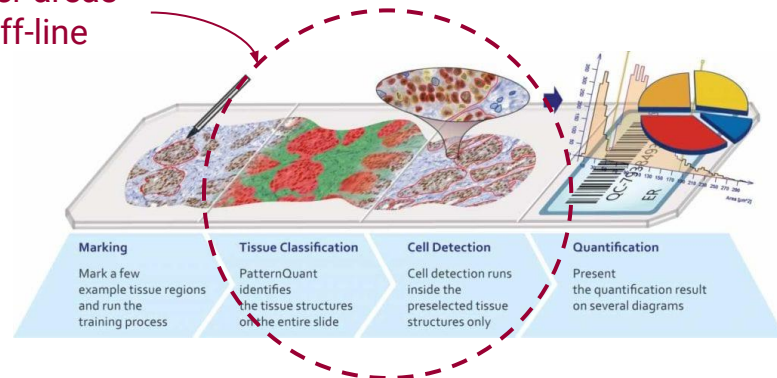
DigiPatICS: The project objective

Proposed paradigm

- **Off-line inference**
 - Automatically selecting the areas to be analyzed
 - Parameter computation inside given areas
 - Proposals to help pathologists
- **On-line pathologist's interaction**
 - Selecting **the area(s)** to be analyzed
- **On-line inference**
 - **Pre-computed** parameter computation
- **On-line pathologist's adjustment**
 - Use of sliders for classification refinement
- **On-line quantization**
 - Data computation and visualization



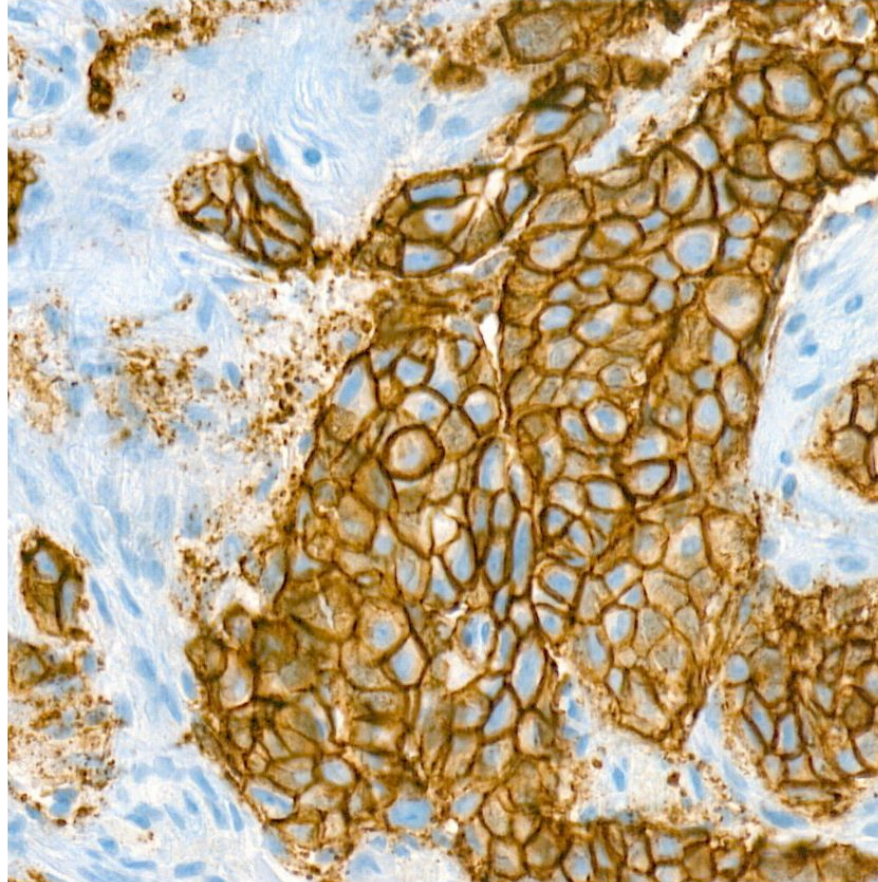
On larger areas
and off-line



Structure of the presentation

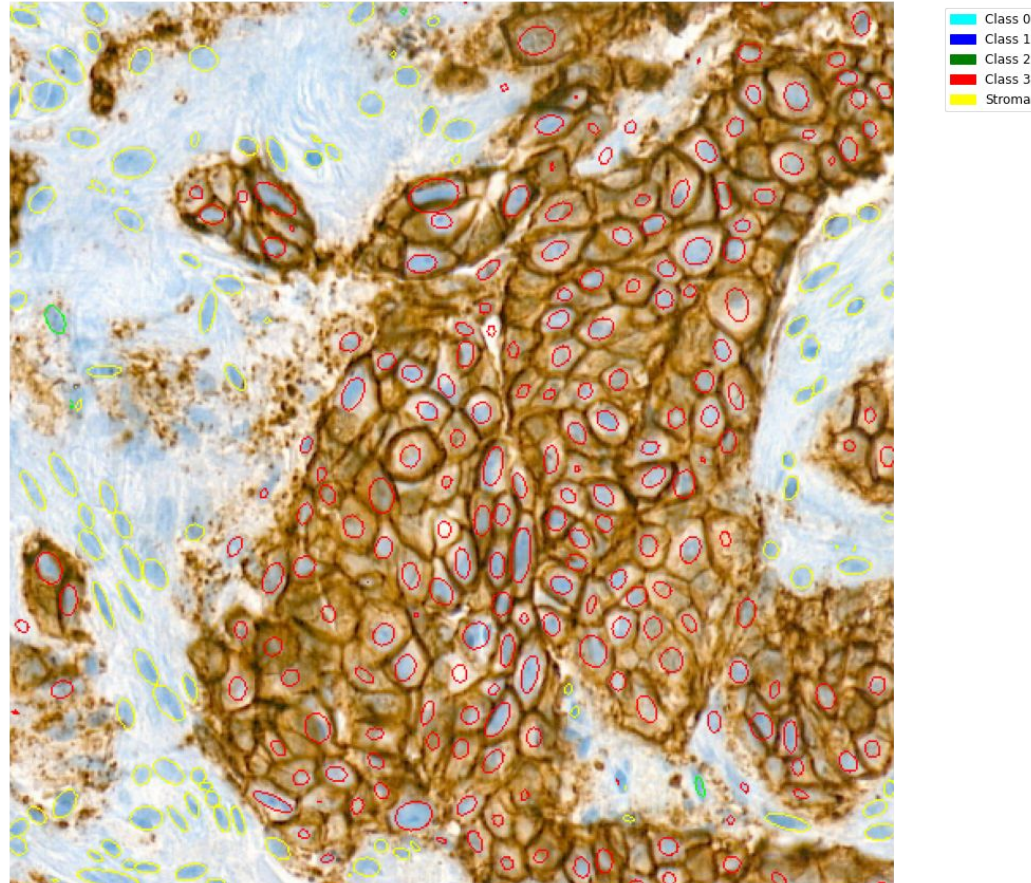
1. The research team
2. The project objective
- 3. The AI we are developing**
 - 3.1. Segmentation and classification over HER2, RE, RP, KI67
 - 3.2. Stroma detection over HER2, RE, RP, KI67
 - 3.3. Color normalization in HER2
- 4. The expert in the loop**
- 5. Conclusions**

Segmentation and Classification algorithm

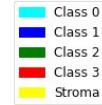
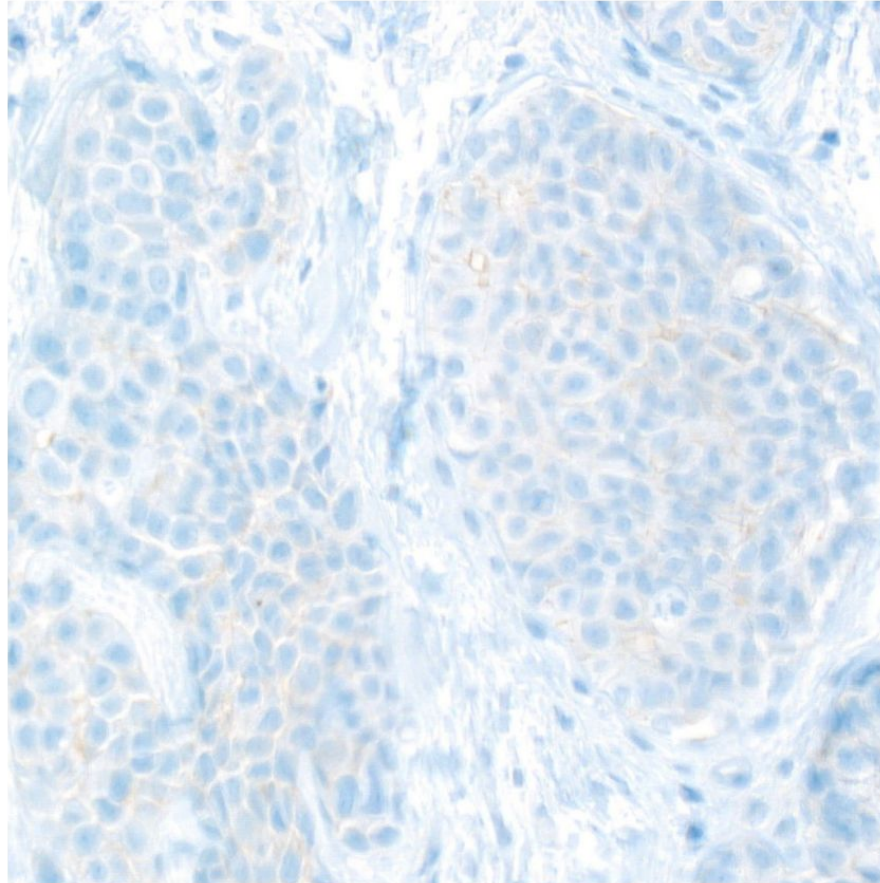


- Class 0
- Class 1
- Class 2
- Class 3
- Stroma

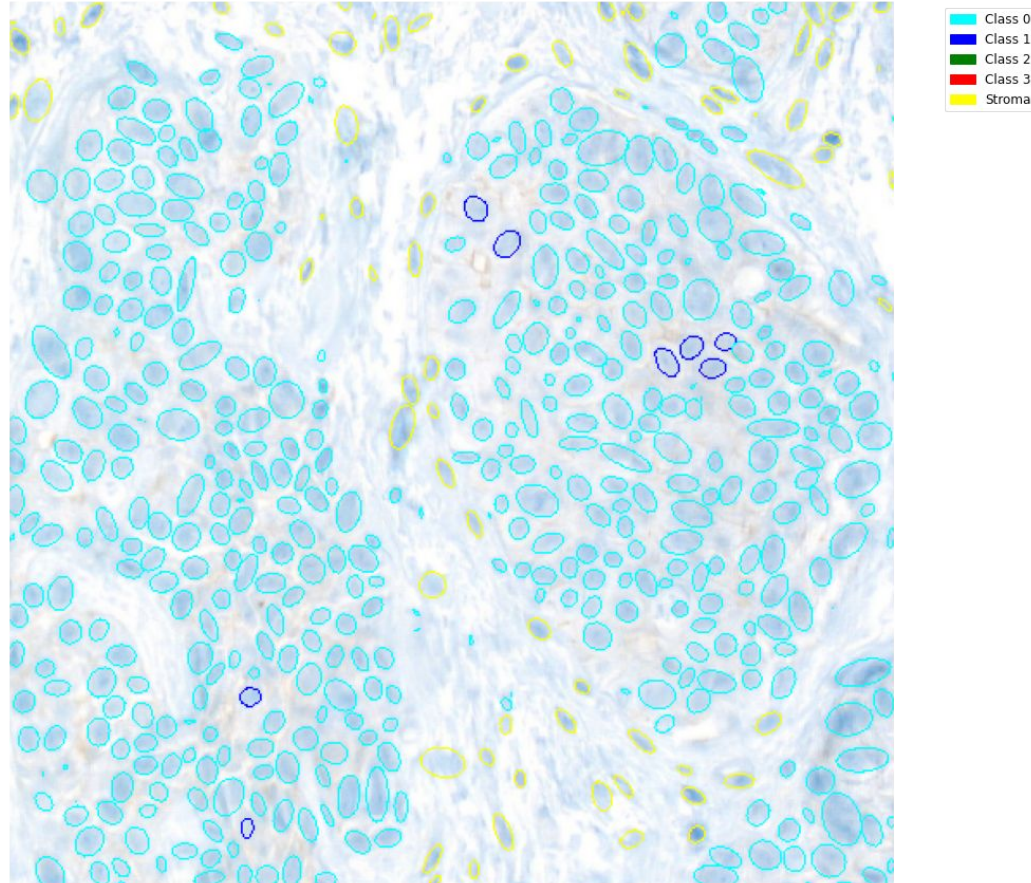
Segmentation and Classification algorithm



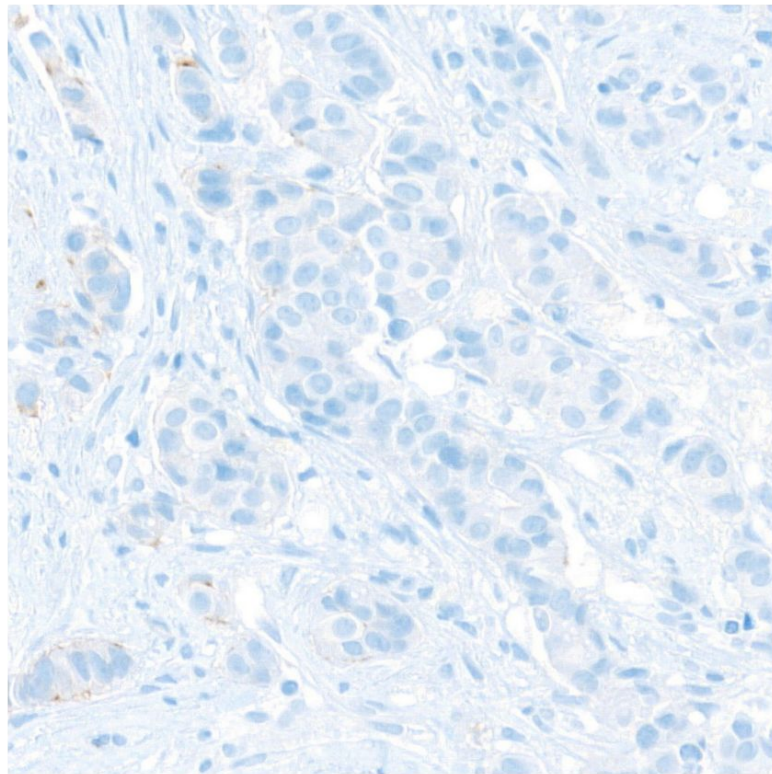
Segmentation and Classification algorithm



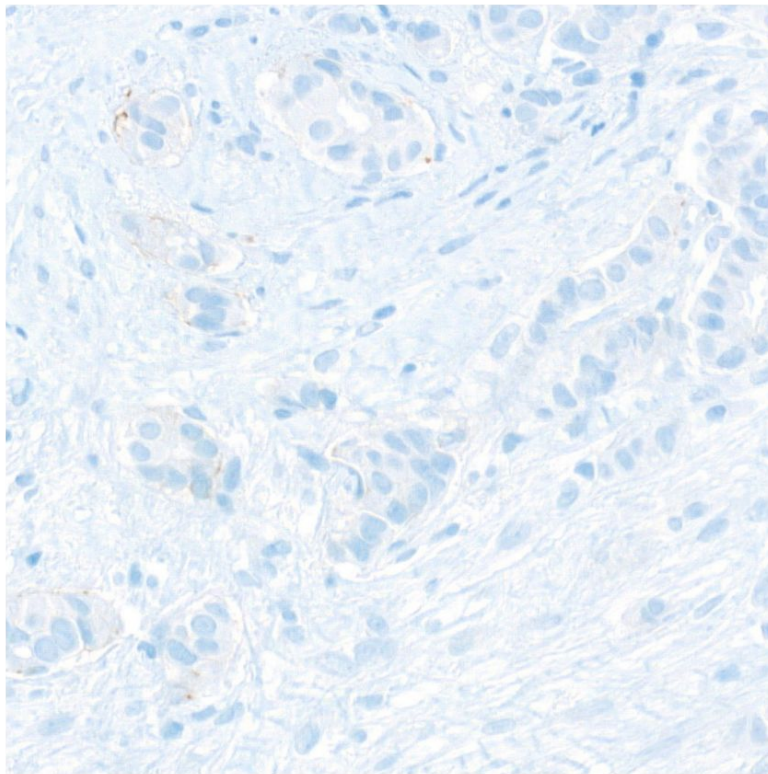
Segmentation and Classification algorithm



Stroma Detection

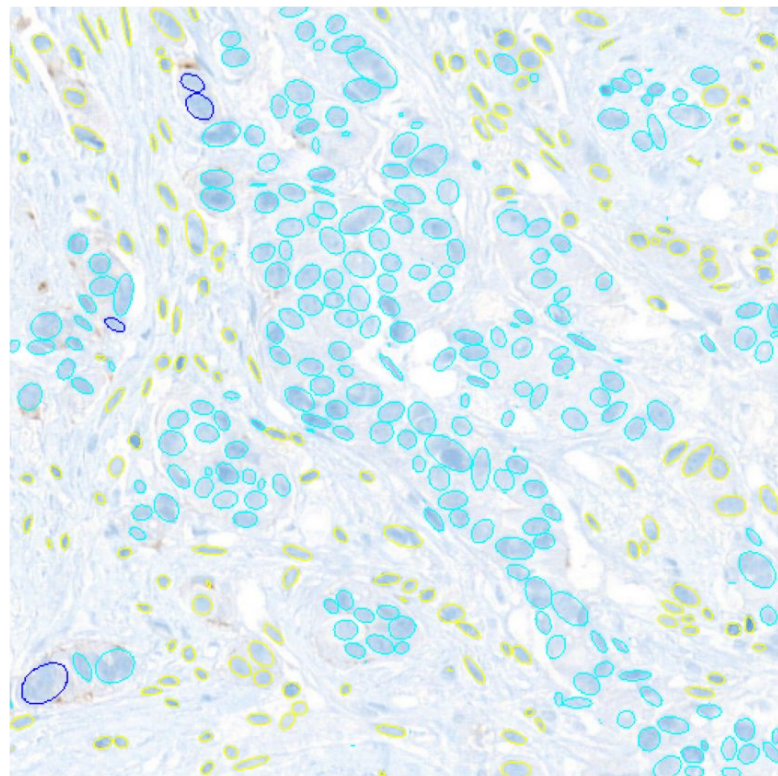


Class 0
Class 1
Class 2
Class 3
Stroma

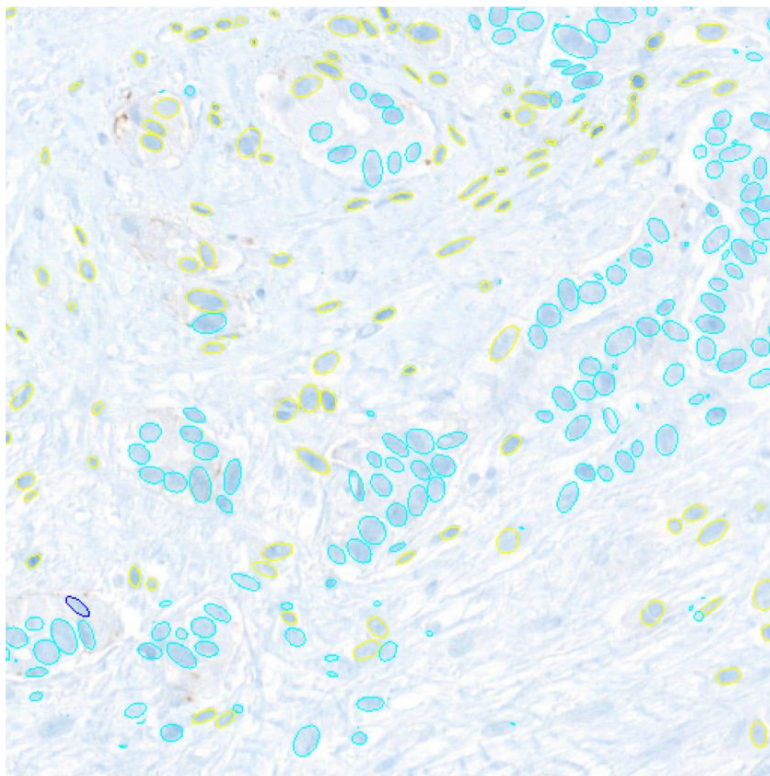


Class 0
Class 1
Class 2
Class 3
Stroma

Stroma Detection

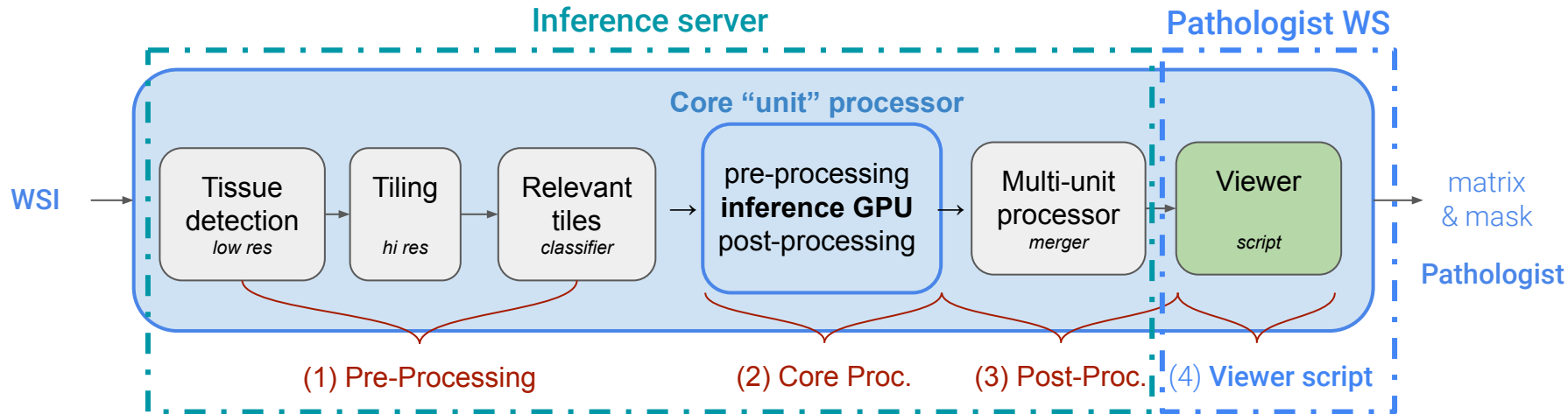


Class 0
Class 1
Class 2
Class 3
Stroma

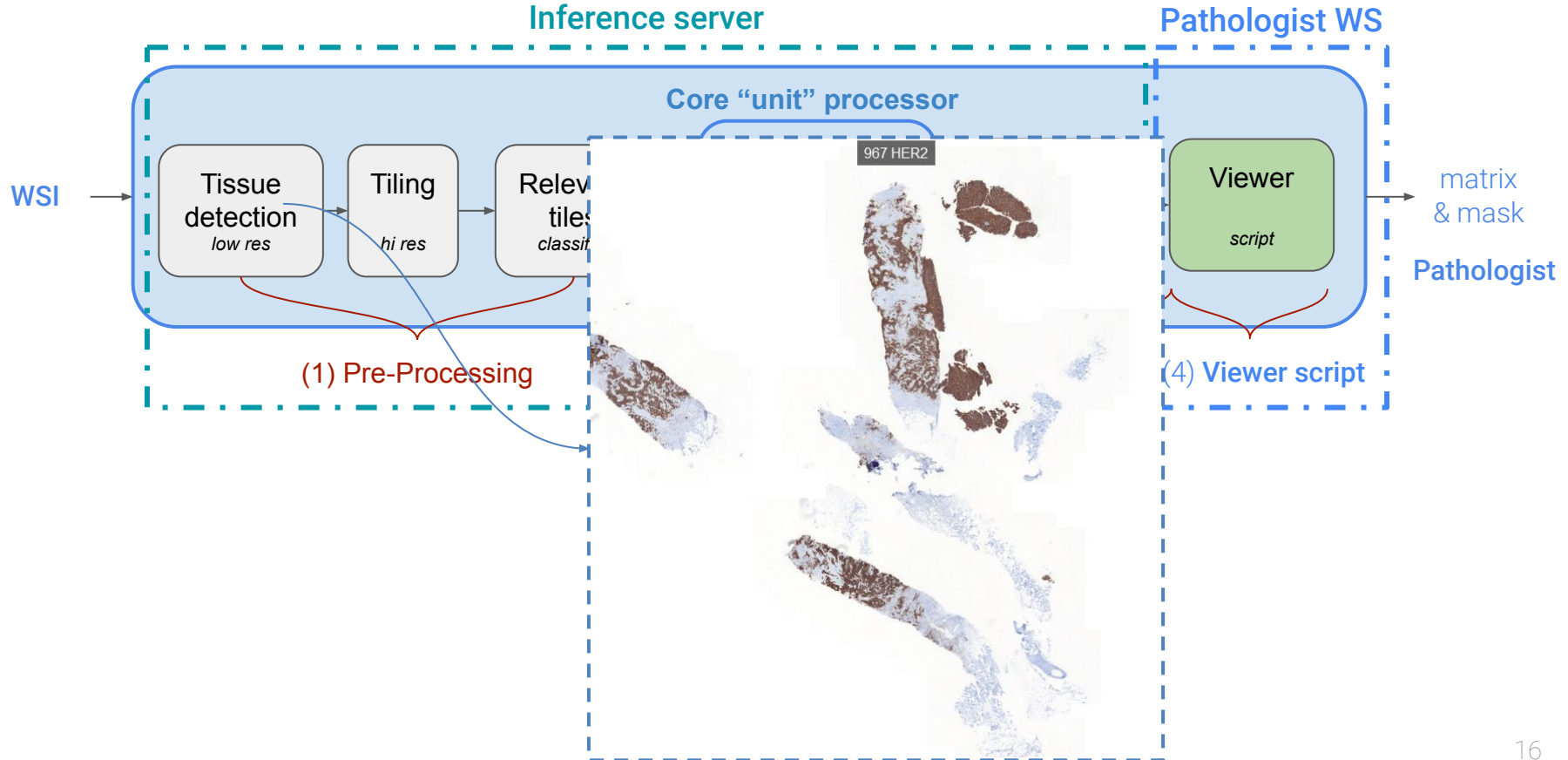


Class 0
Class 1
Class 2
Class 3
Stroma

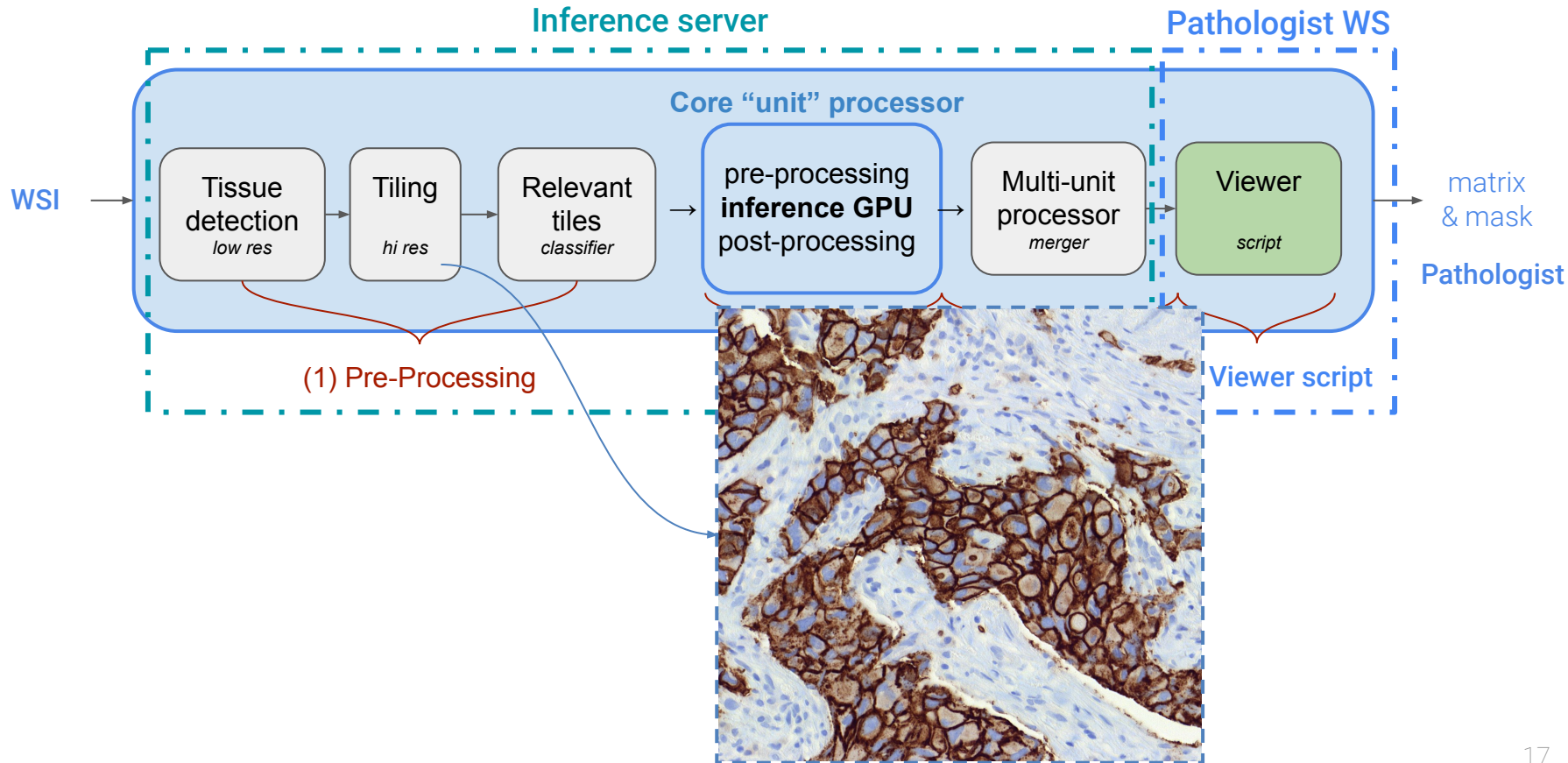
Segmentation and Classification algorithm



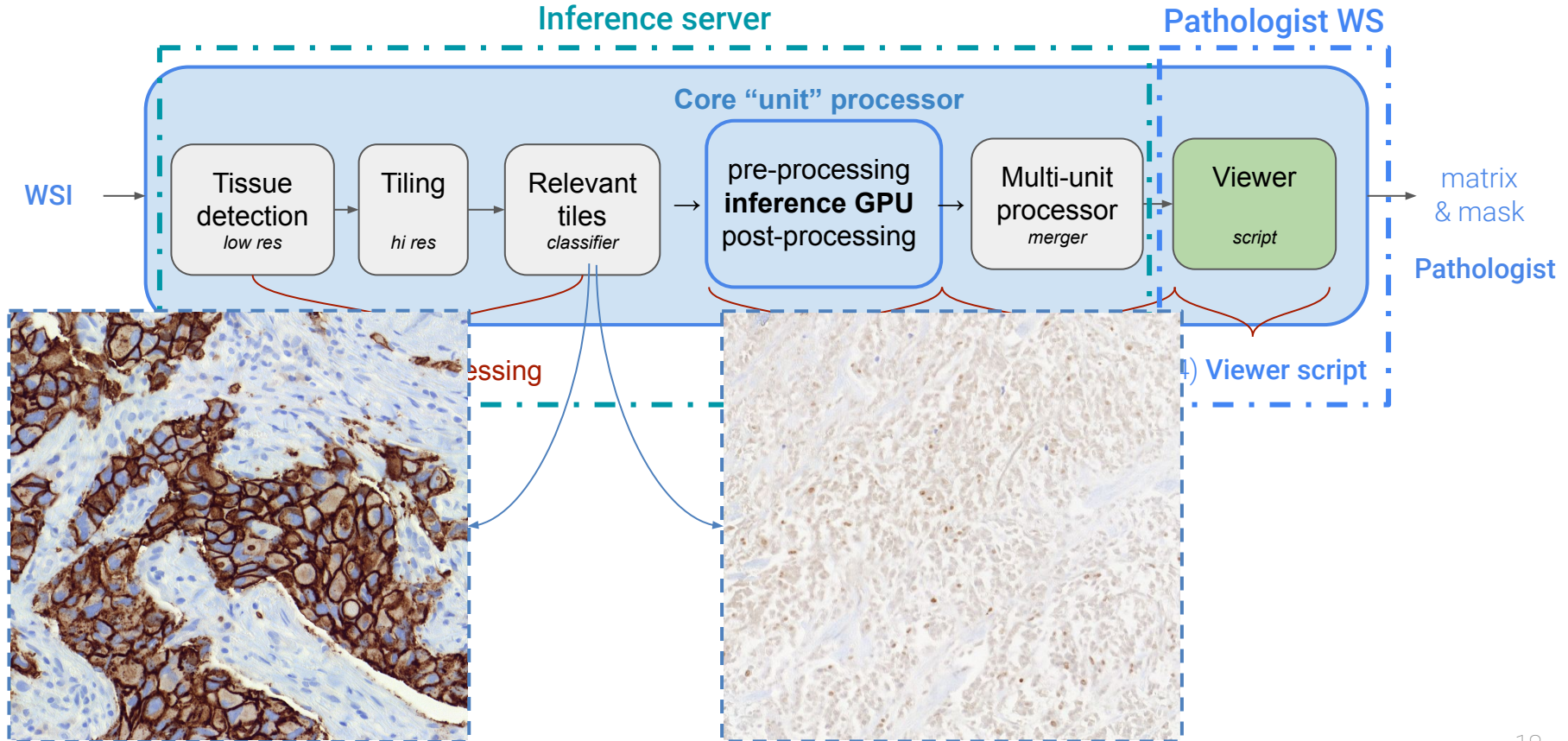
Segmentation and Classification algorithm



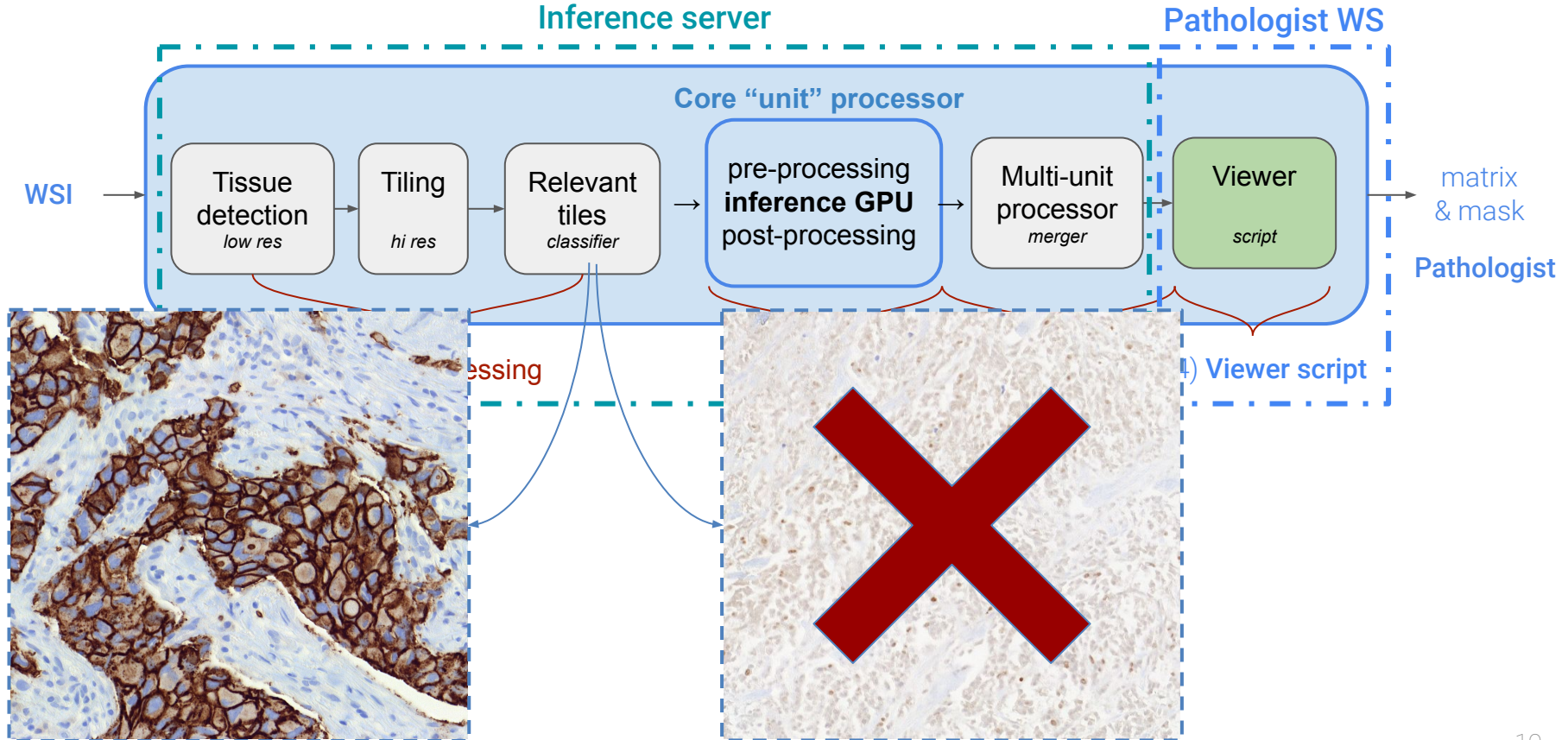
Segmentation and Classification algorithm



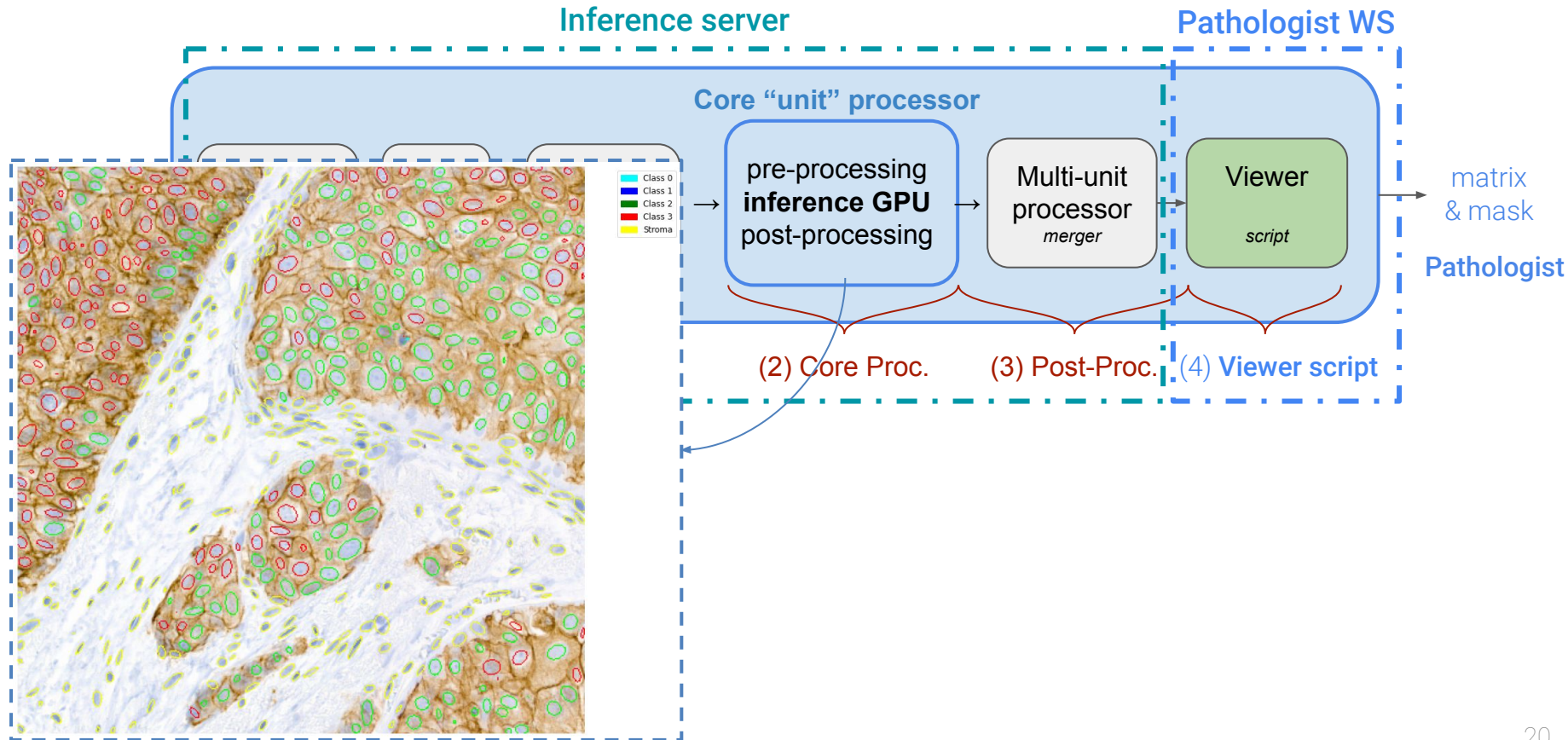
Segmentation and Classification algorithm



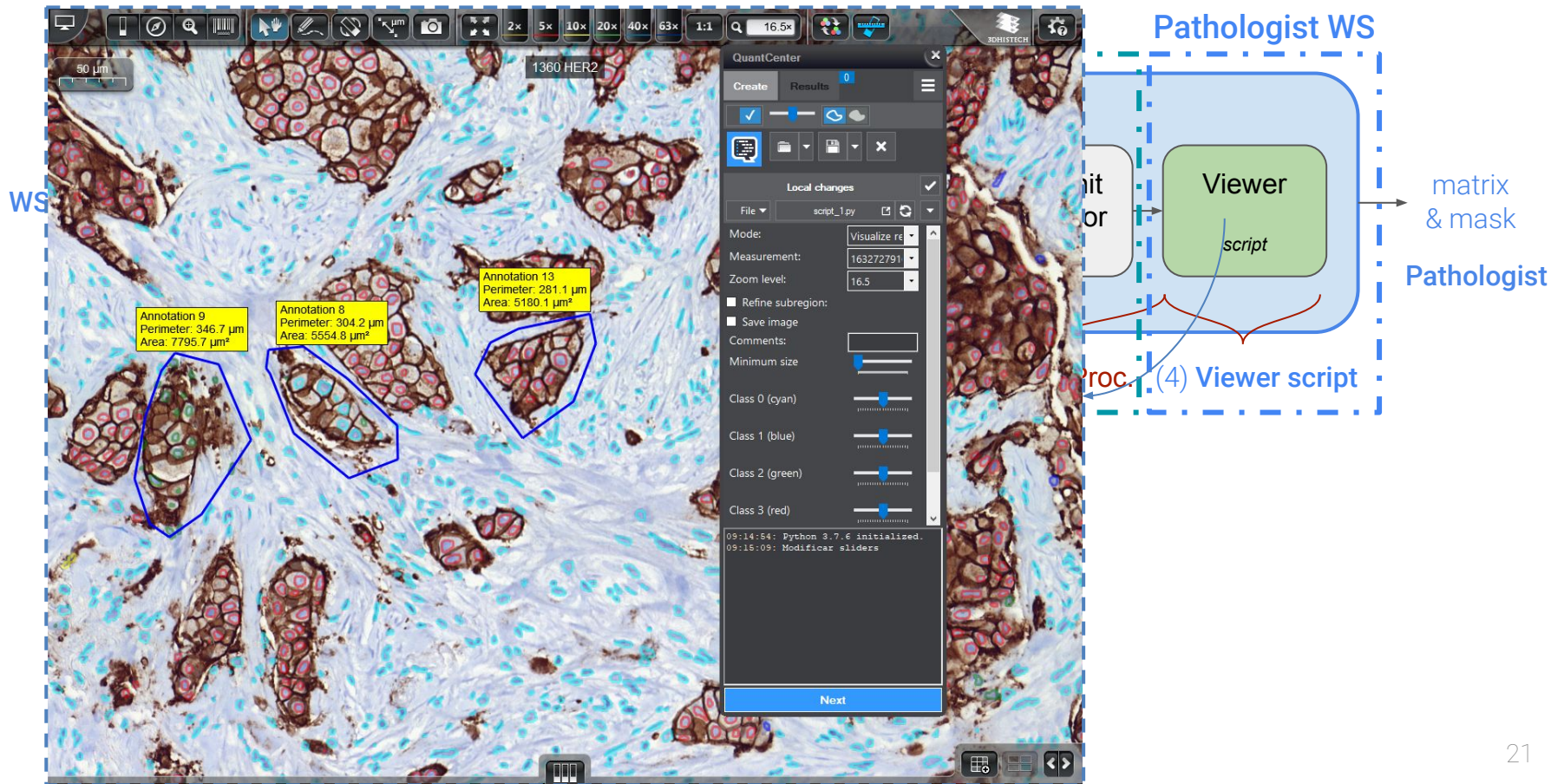
Segmentation and Classification algorithm



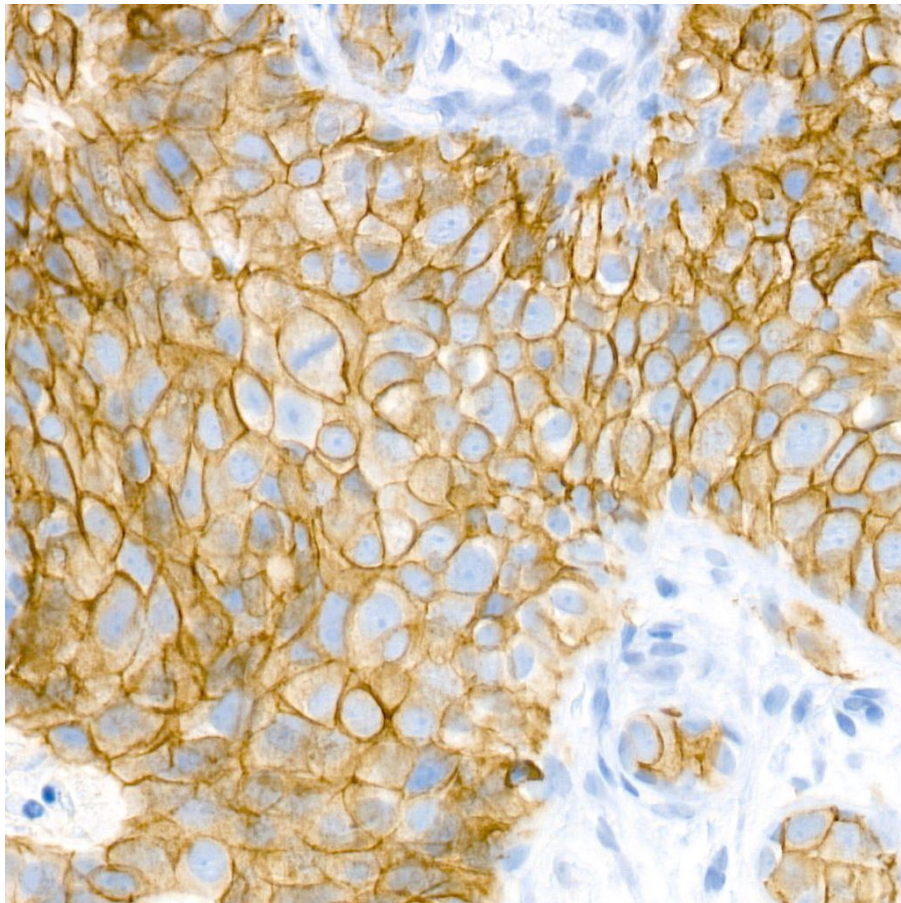
Segmentation and Classification algorithm



Segmentation and Classification algorithm

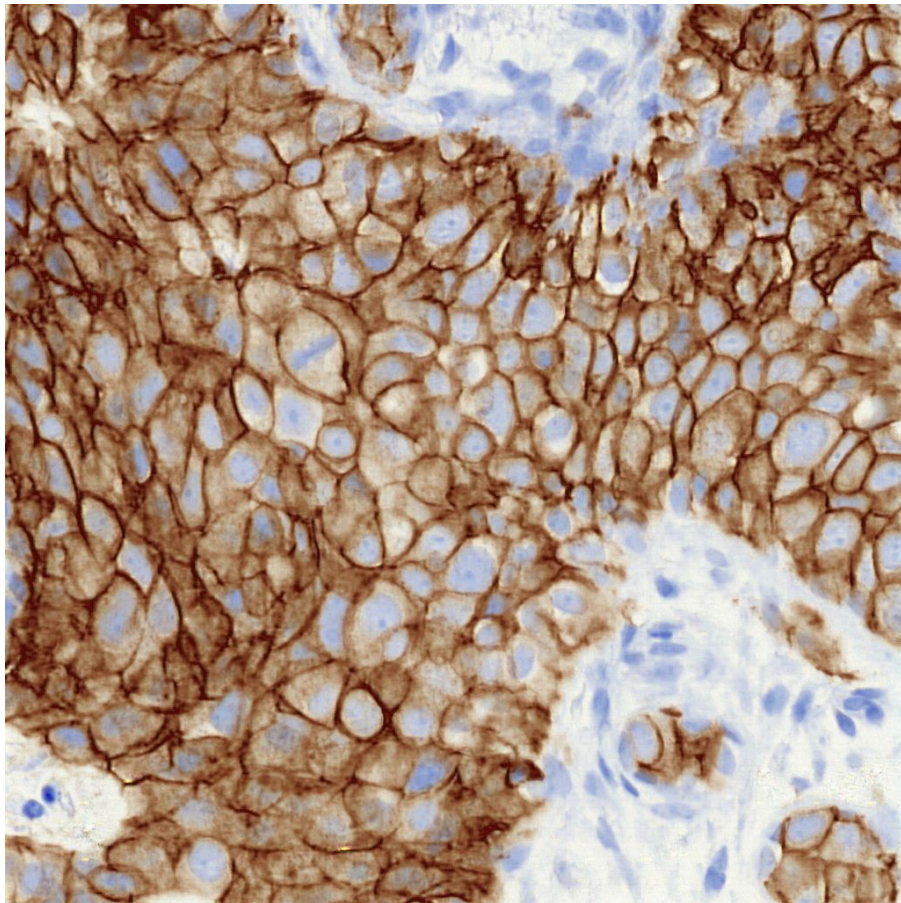


Color Normalization



HER2 tile

Color Normalization



Fake HER2 tile

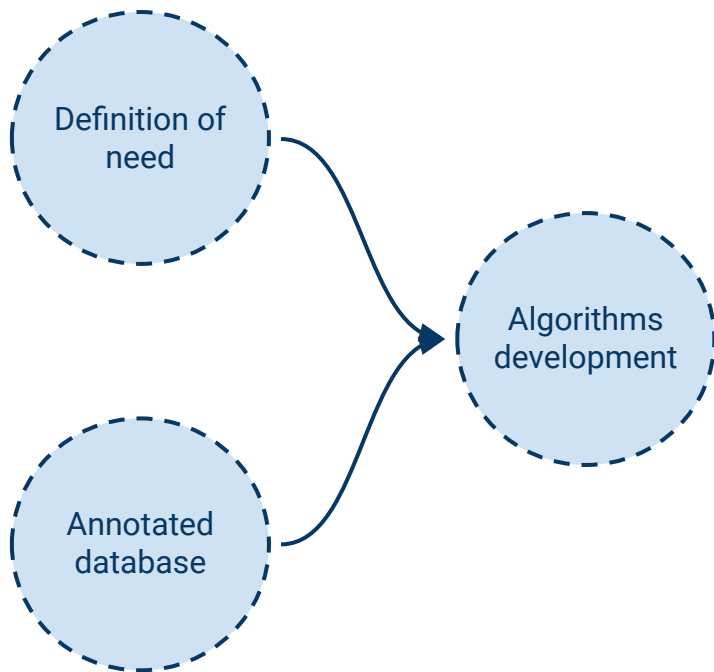
Structure of the presentation

1. The research team
2. The project objective
3. The AI we are developing
 - 3.1. Segmentation and classification over HER2, RE, RP, KI67
 - 3.2. Stroma detection over HER2, RE, RP, KI67
 - 3.3. Color normalization in HER2
4. The expert in the loop
5. Conclusions

The expert in the loop

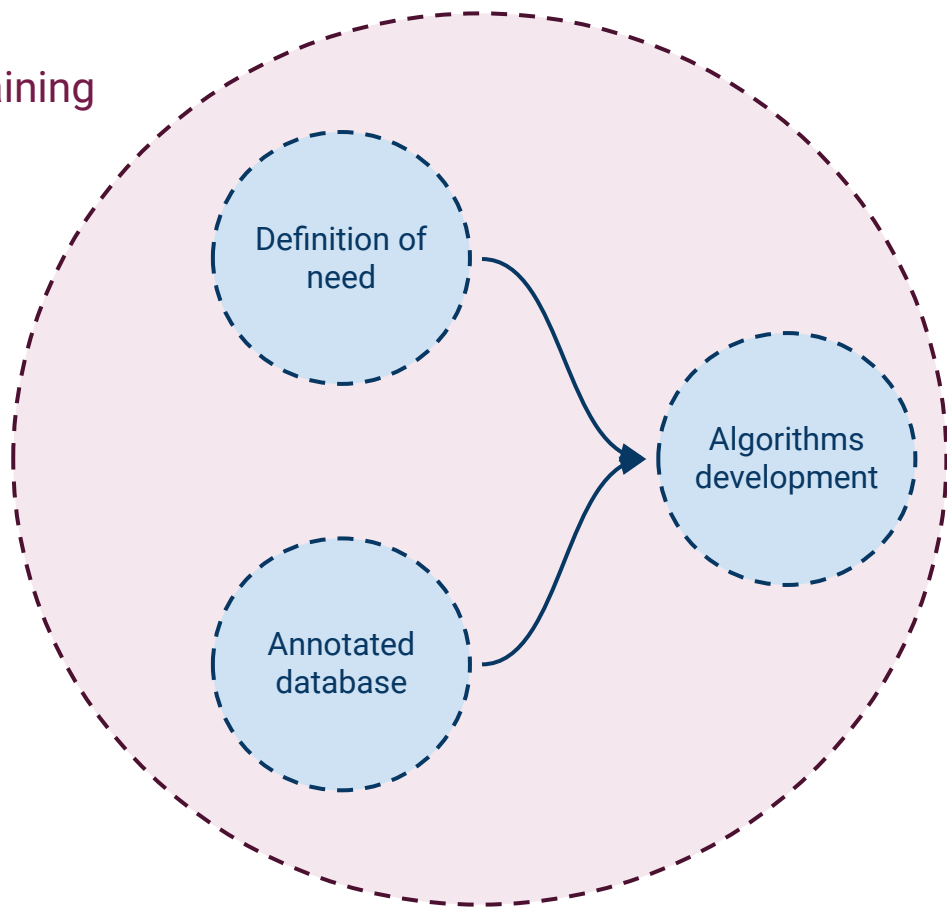


The expert in the loop



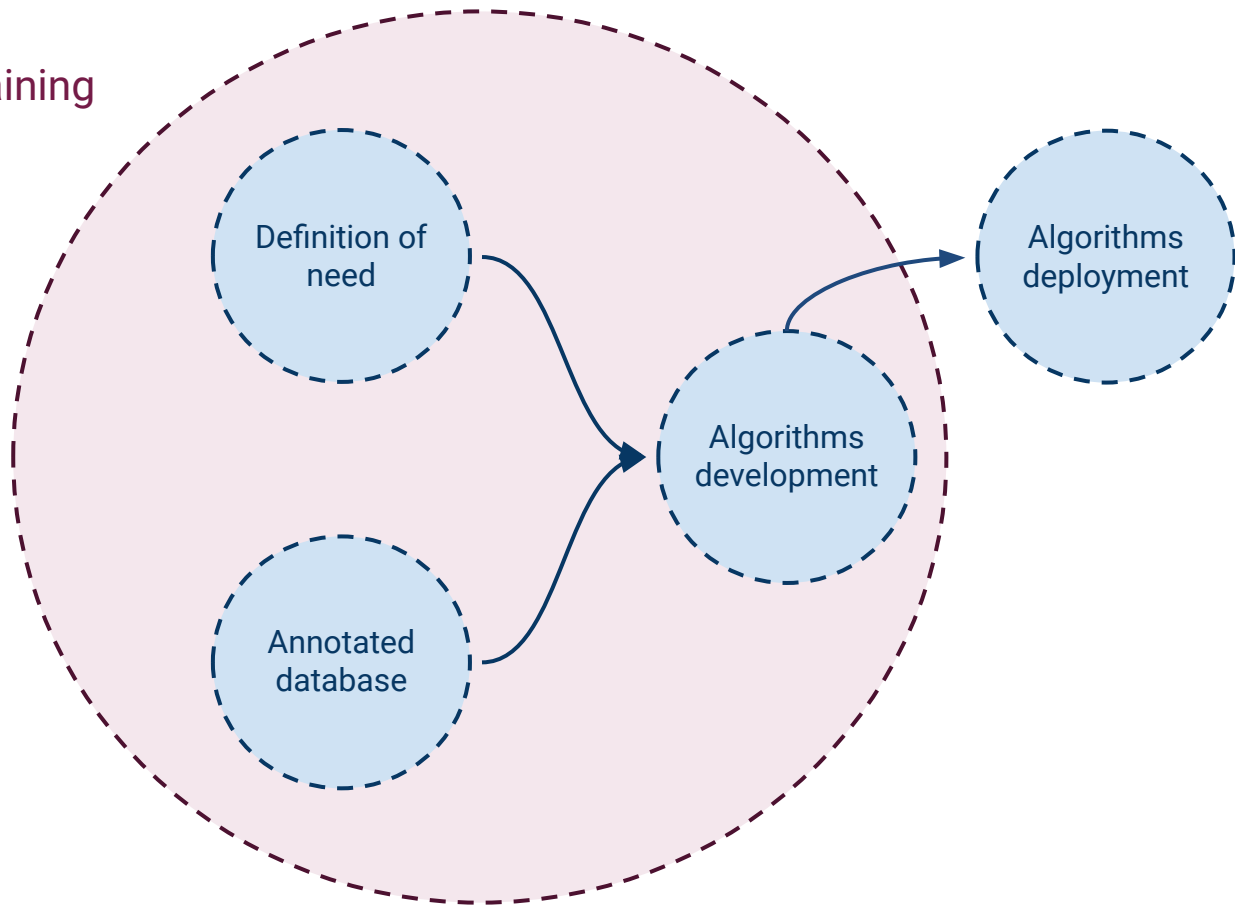
The expert in the loop

Training



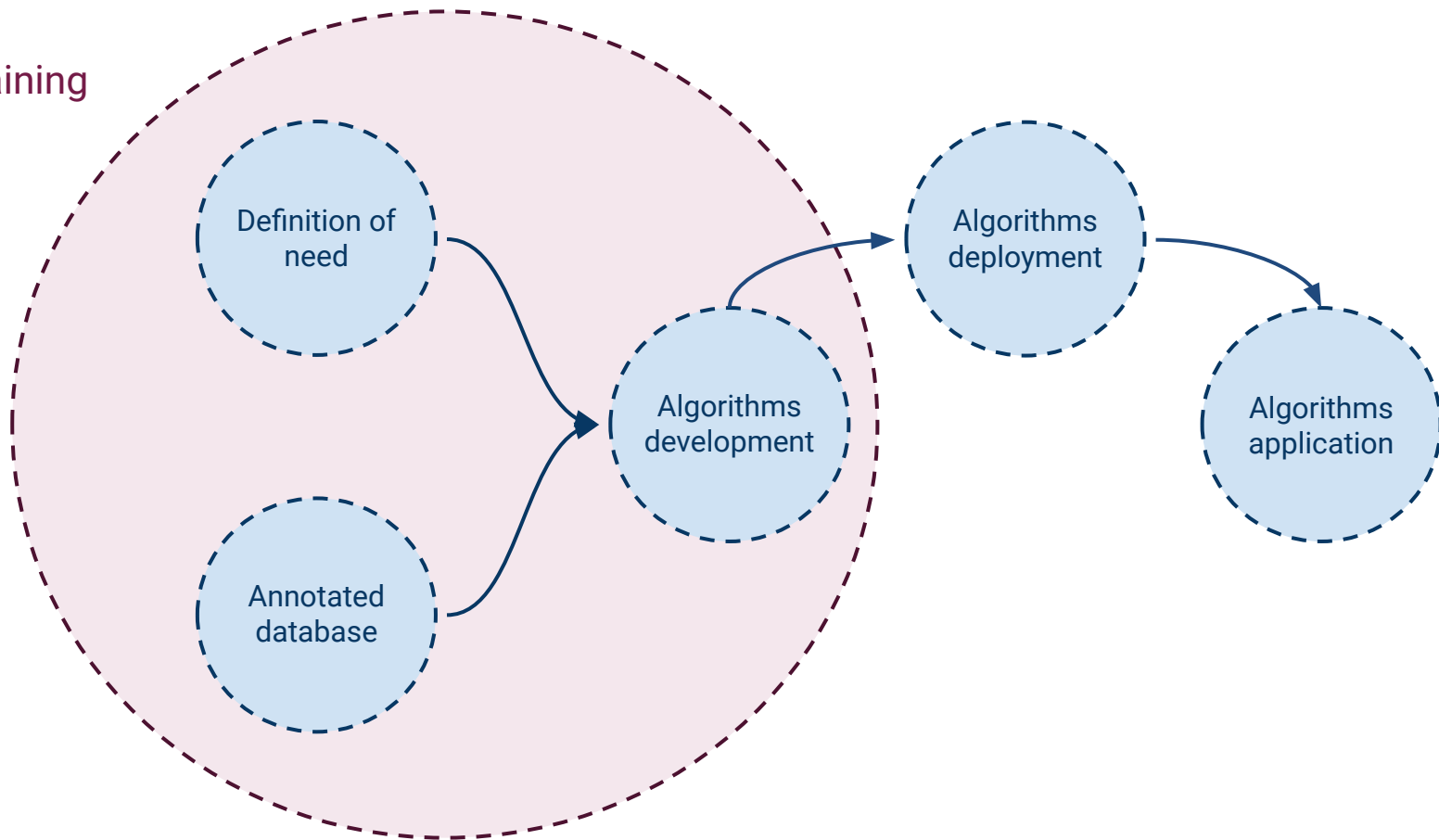
The expert in the loop

Training



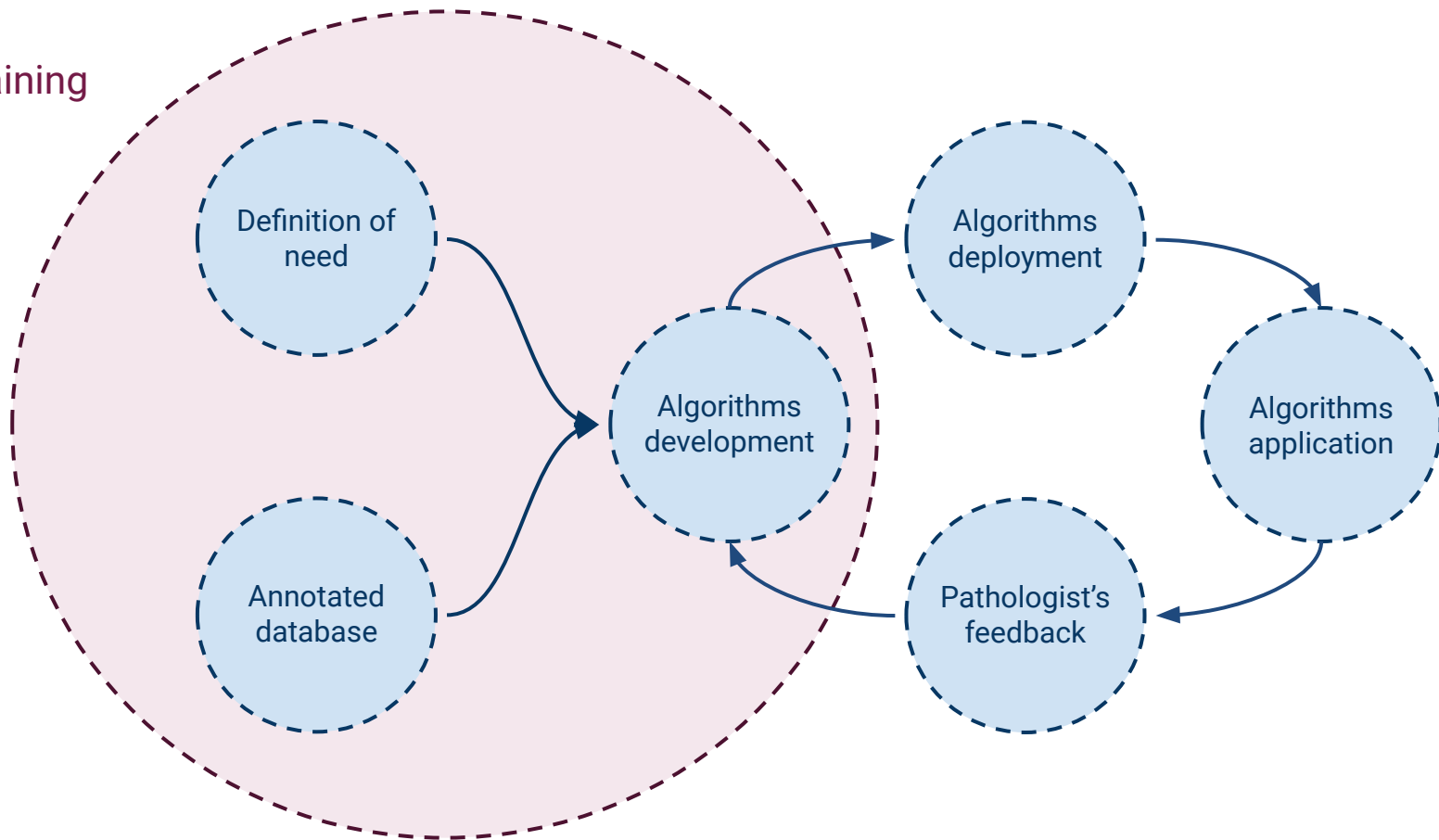
The expert in the loop

Training

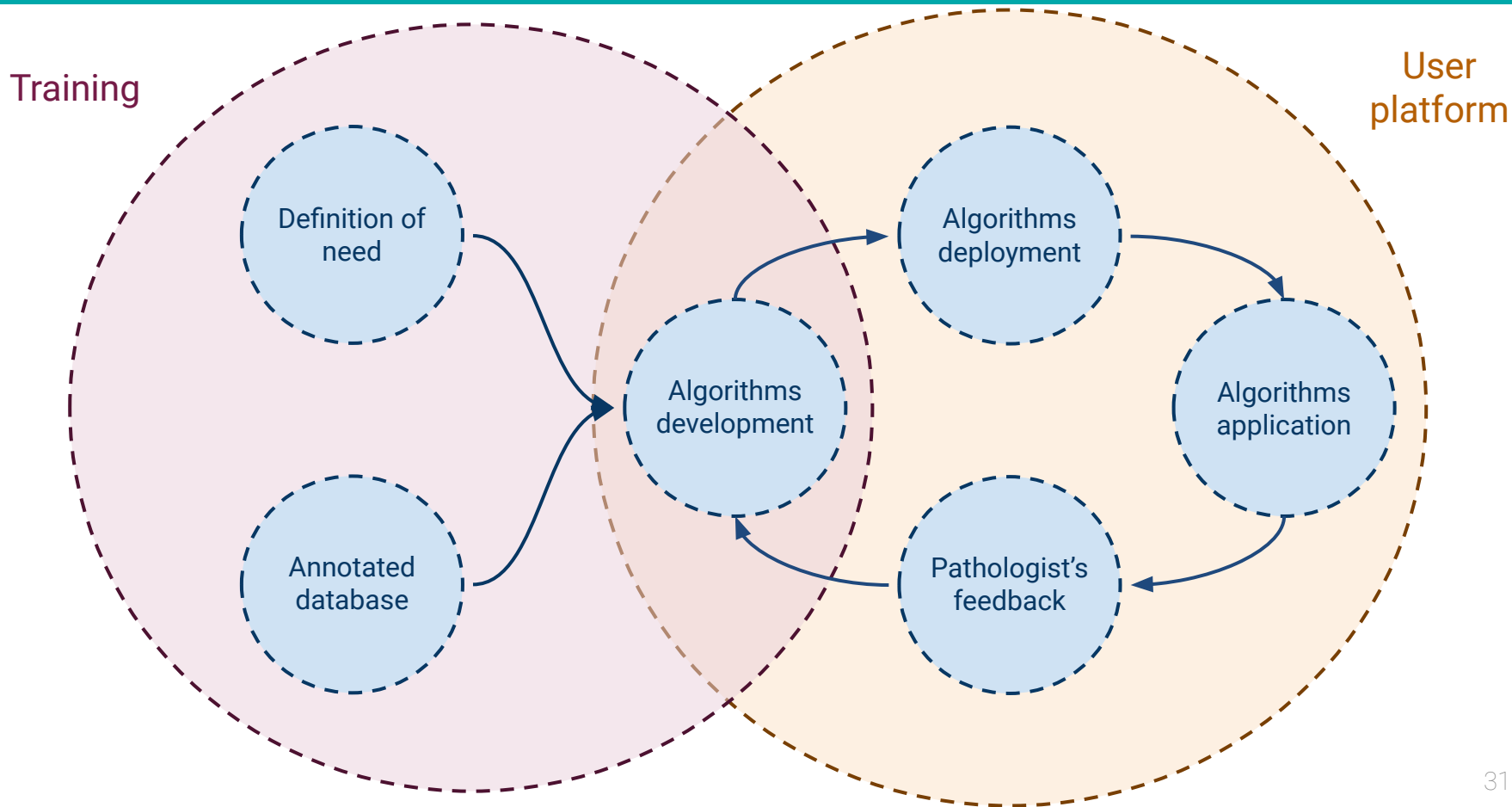


The expert in the loop

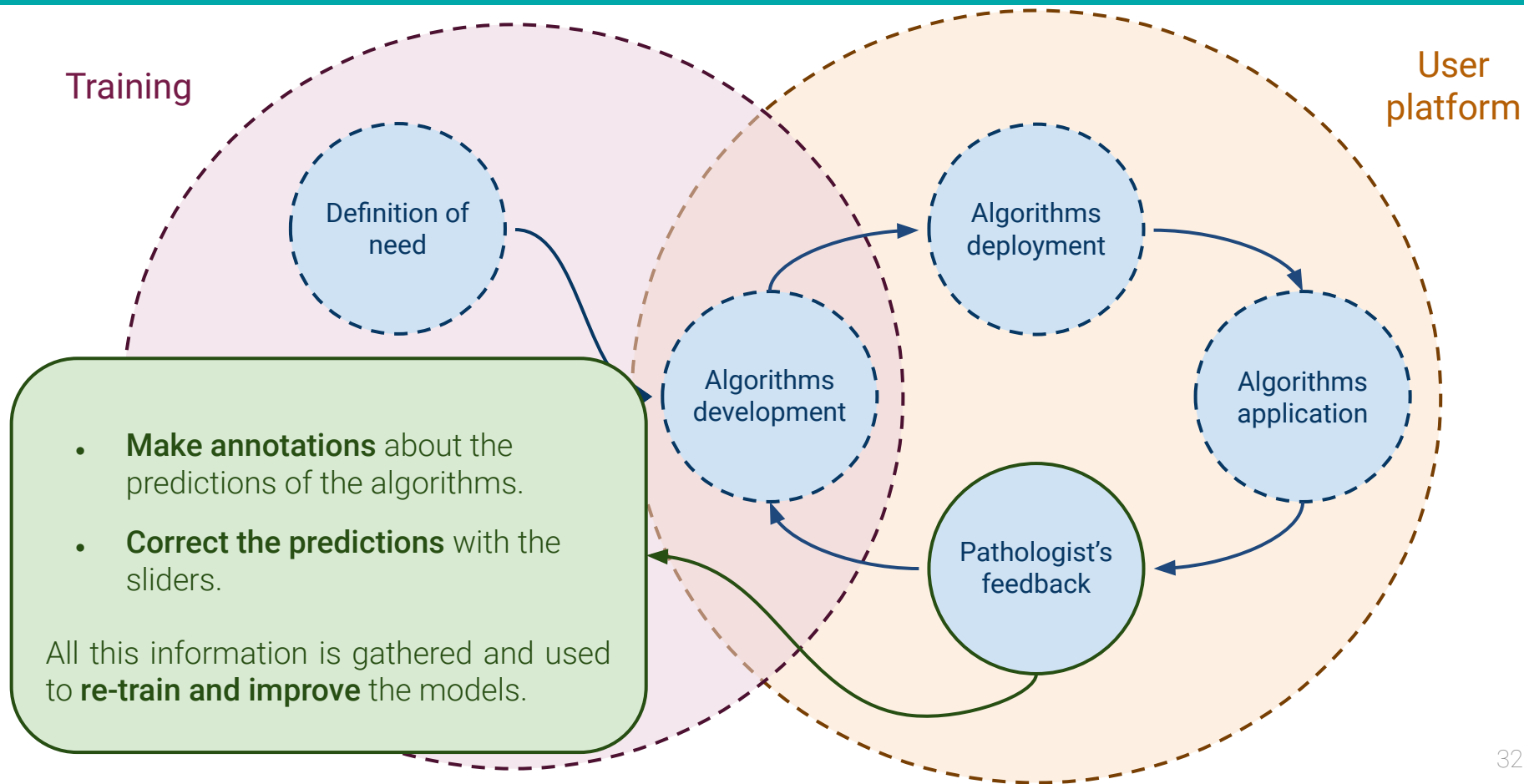
Training



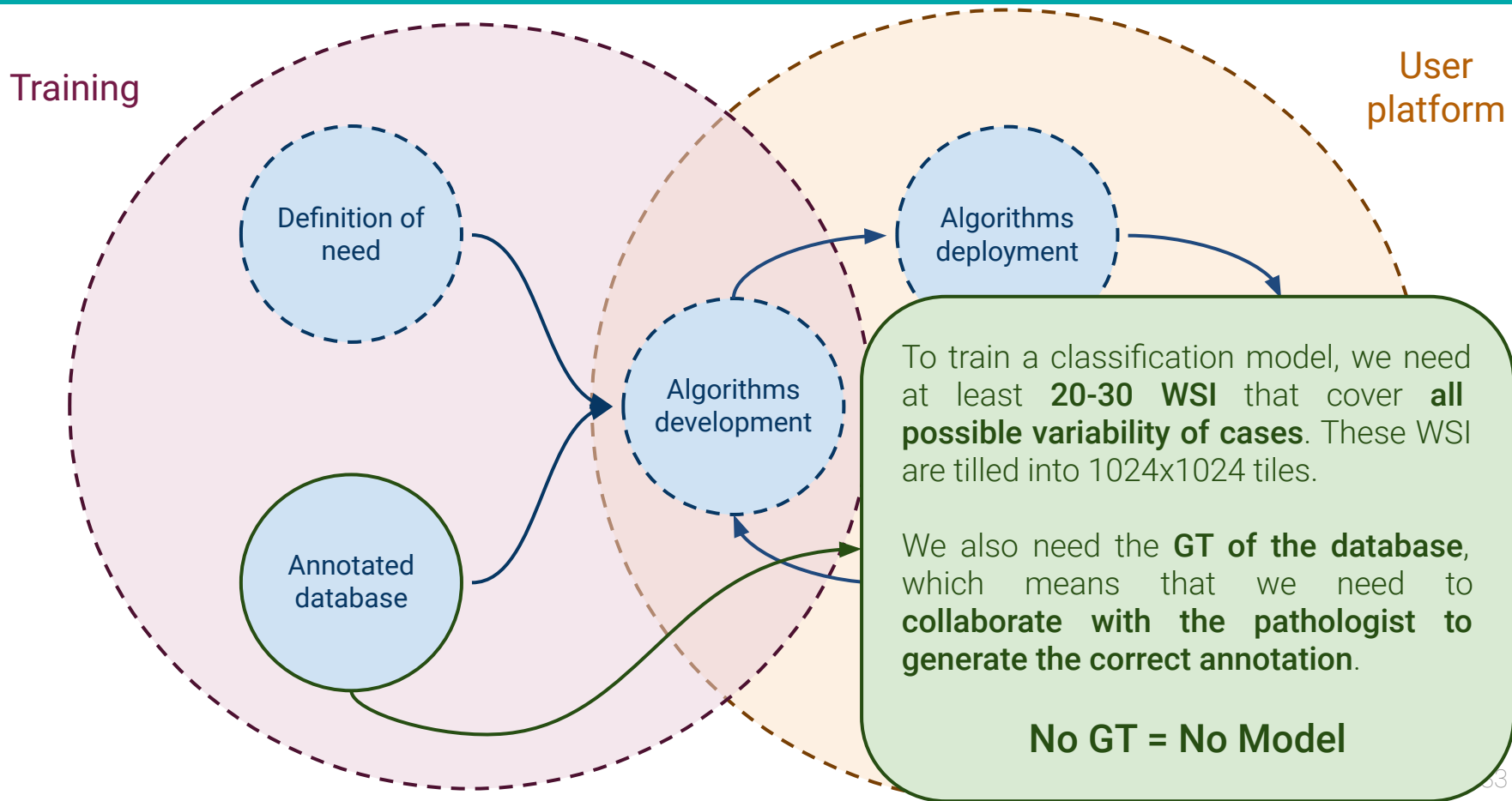
The expert in the loop



The expert in the loop



The expert in the loop

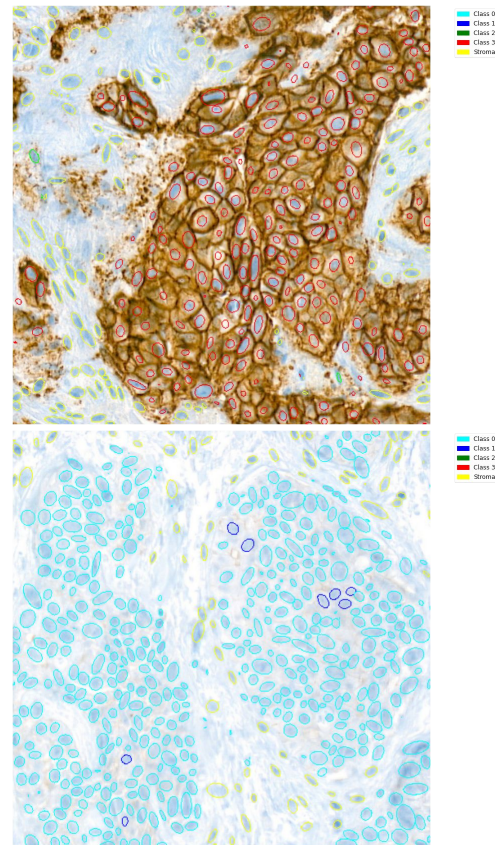


Structure of the presentation

1. The research team
2. The project objective
3. The AI we are developing
 - 3.1. Segmentation and classification over HER2, RE, RP, KI67
 - 3.2. Stroma detection over HER2, RE, RP, KI67
 - 3.3. Color normalization in HER2
4. The expert in the loop
5. **Conclusions**

Summary

- **Need of (large) annotated databases**
 - Multidisciplinary Research Team
 - Experts in the loop
 - Creation of databases of increasing quality
 - Include the annotation in the clinical routine
- **Definition of a useful structure for the pathologists**
 - Reduce the time, increase the usefulness of proposals
- **Analysis of different strategies for image analysis**
 - Develop / Test the correct algorithms for each need
- **Is that AI?**
 - Can you really use AI?



The AI we are developing

David Anglada Rotger

Image Processing Group (**GPI**)

Intelligent Data Science and Artificial Intelligence Research Center (**IDEAI**)

Universitat Politècnica de Catalunya (**UPC BarcelonaTECH**)