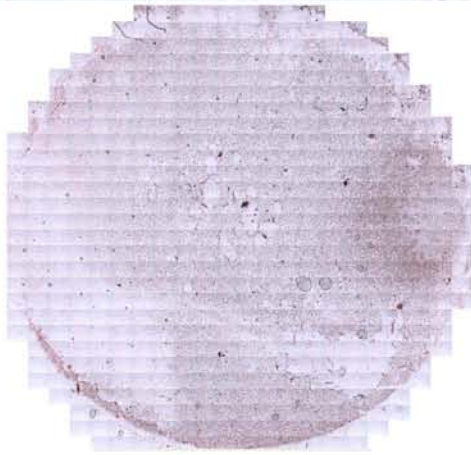


Cellular Rare  
Event Detection  
Analysis

FDA 510(k) cleared



 **ariol**<sup>®</sup>

Automated scanning, detection and characterization of anti-cytokeratin labeled cells in bone marrow as an aid to the pathologist in the detection of epithelial cells

## Sophisticated Rare Event Analysis

**In addition to quickly finding occult tumor cells, Ariol offers additional power to improve analysis:**

Rapid and automatic detection of rare event cells




Increased accuracy compared to manual analysis<sup>1</sup>



Set size and shape thresholds to automatically gate cells either in or out

Sort the gallery of detected events by both cell size and shape to quickly confirm positive tumor cells

**Cellular Rare  
Event Detection  
Analysis**

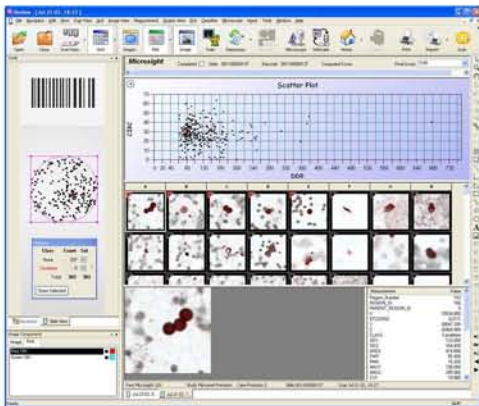
**Example Workflow**

-  System retrieves case information via barcode, loads slide onto stage, pre-scans at 1.25x to locate tissue, and then auto scans at 10x with real-time analysis to identify candidate objects
-  User reviews, on the monitor, the candidate objects found to confirm or reject them as micrometastases
-  System sums the number and total area of micrometastases confirmed  
System generates report

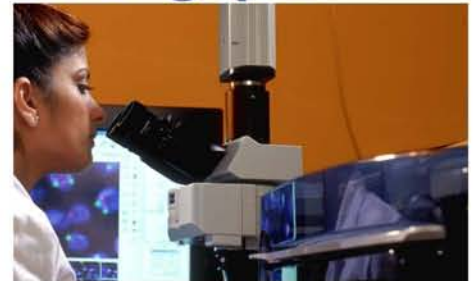
 Time saving steps when system runs unattended     User interactive steps



Automation for  
better detection,  
with consistent  
scoring, and  
improved  
throughput



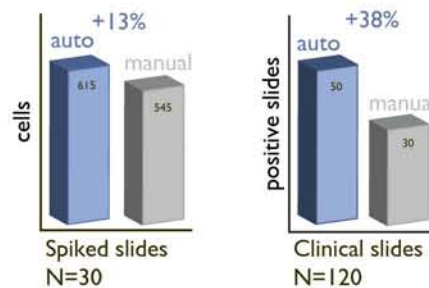
High resolution images are evaluated in the Review gallery. The system precisely relocates to any object with a single click for viewing through the microscope oculars. The gallery, slide map and plotting tools are all interactively linked for easy sorting and full analysis.



Even with the SL-50 slide loader you always have the use of a full working microscope.

Analysis of manual versus automated detection methods demonstrated the technology's enhanced accuracy over manual methods. In spiked samples Ariol detected 13% more cells and in actual clinical samples the gain in detection rose to 38% !

I. Borgen E. et al. *Cytometry* 46(4):215-221 (2001)



**North America**

Applied Imaging Corp.  
120 Baytech Drive  
San Jose, CA 95134-2302  
USA  
Toll-free : +1 800 634 3622  
Telephone: +1 408 719 6400  
Fax: +1 408 719 6401

**International**

Applied Imaging International Ltd  
BioScience Centre  
Times Square  
Newcastle Upon Tyne NE1 4EP  
UK  
Telephone: +44 (0) 191 202 3100  
Fax: +44 (0) 191 202 3101

