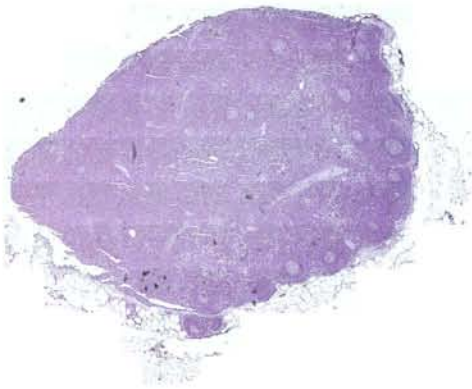
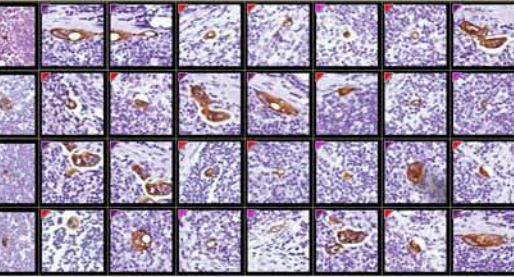


Sentinel Lymph Node Analysis



 **ariol**[®]

Automated scanning, detection and characterization of anti-cytokeratin labeled cells in lymph node tissue to assist in the identification of occult tumor cells

Sophisticated Rare Event Analysis

In addition to quickly finding metastatic cells, Ariol offers additional power to improve analysis:

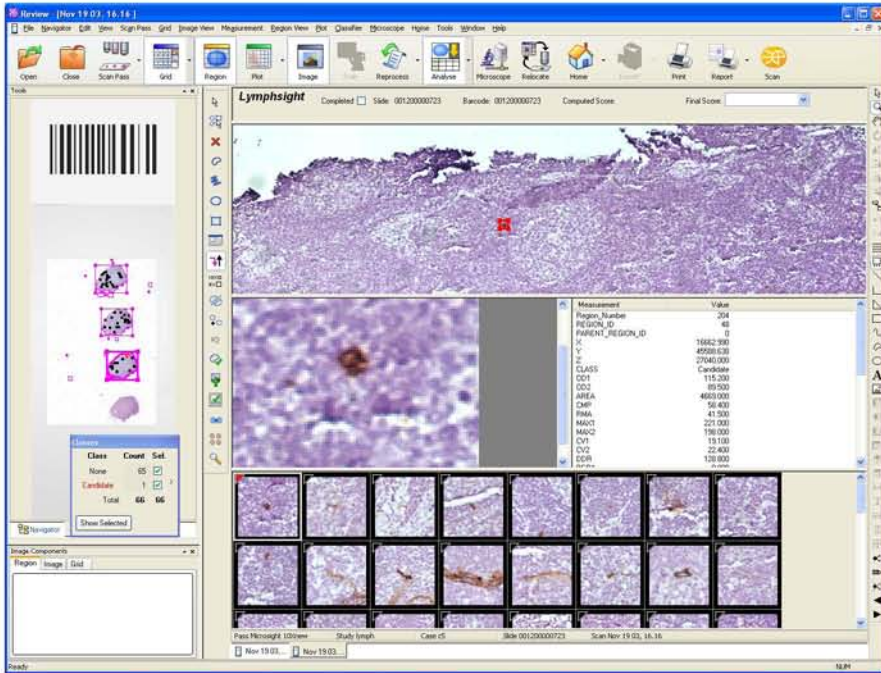
Rapid and automatic detection of rare event cells

Increased accuracy compared to manual analysis

Set size and shape thresholds to automatically gate cells either in or out

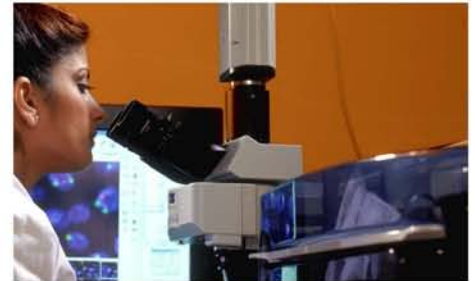
Sort the gallery of detected events by both cell size and shape to quickly confirm positive tumor cells

Sentinel Lymph Node Analysis






Fast and easy
to use. Ariol for
accurate
detection in
Sentinel Lymph
Node analysis



Easily determine the location of candidate cells within the node by clicking on the image grid. The stitched image of the node is automatically repositioned in the region view above. The slide map highlights the slice that contains the object.



Even with the SL-50 slide loader you always have the use of a full working microscope.

Example Workflow

-  System retrieves case information via barcode, loads slide onto stage, pre-scans at 1.25x to locate tissue, and then auto-scans at 10x with real-time analysis to identify candidate objects
-  User reviews, on the monitor, the candidate objects found to confirm or reject them as micrometastases (system can also auto-relocate candidate objects for the user under the microscope if desired)
-  System sums the number and total area of micrometastases confirmed
System generates report

 Time saving steps when system runs unattended  User interactive steps

North America

Applied Imaging Corp.
120 Baytech Drive
San Jose, CA 95134-2302
USA

Toll-free : +1 800 634 3622

Telephone: +1 408 719 6400

Fax: +1 408 719 6401

International

Applied Imaging International Ltd
BioScience Centre

Times Square
Newcastle Upon Tyne NE1 4EP
UK

Telephone: +44 (0) 191 202 3100

Fax: +44 (0) 191 202 3101

